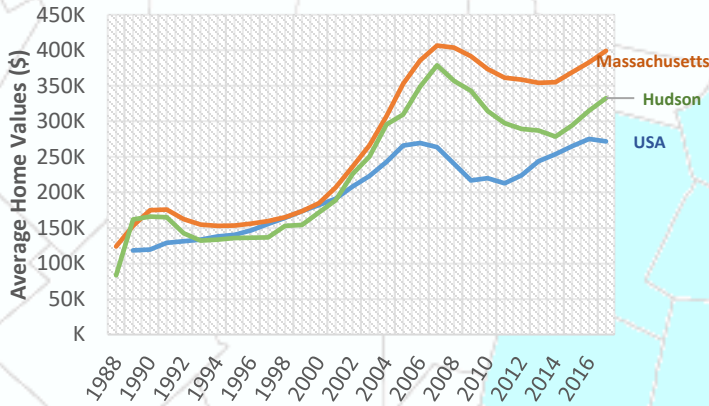


### Rising Home Values



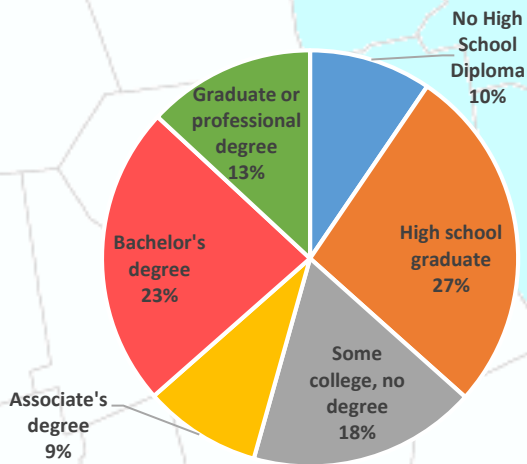
Beyond the year to year averages, in February 2017, the median single family home in Hudson sold for \$325,000<sup>1</sup>. This is higher than the state median sale price for the same month which was \$319,000<sup>1</sup> and the national median for February which was \$228,200<sup>2</sup>.

### Increasing Payroll



From Q2 2015 to Q2 2016, the payroll for all places of employment in Hudson was \$640,257,527.<sup>3</sup> As the town has recovered from the recession the payroll has increased significantly in the last few years.

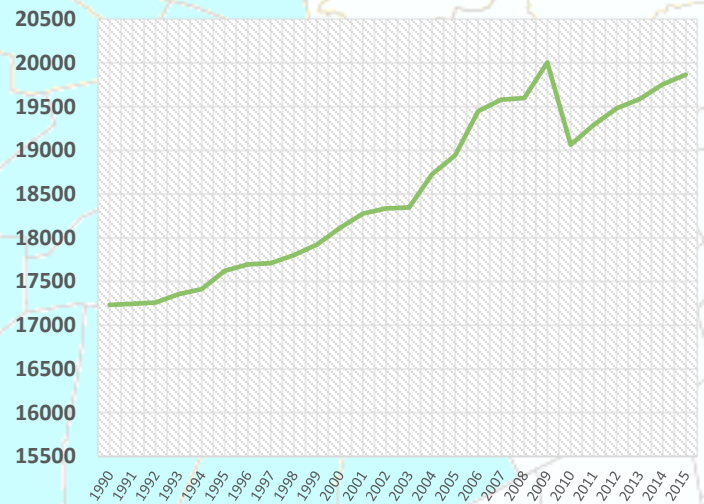
### Highly Educated



2011-2015 ACS (U.S. Census Bureau)

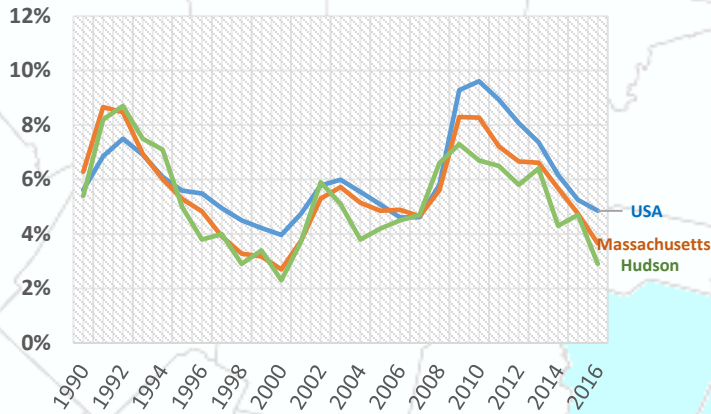
Hudson has a highly educated population compared to the nation with 36% of residents having a bachelor's degree or higher. During the same time only 29.8% of all people in the U.S. had at least a bachelor's degree.<sup>4</sup>

### Growing Population



The population of Hudson has been increasing steadily. In 2000, the population of Hudson was 18,113 this increased to 19,063 by 2010, and in 2015, the population of Hudson was estimated to be approximately 19,864.<sup>5</sup>

## Low Unemployment



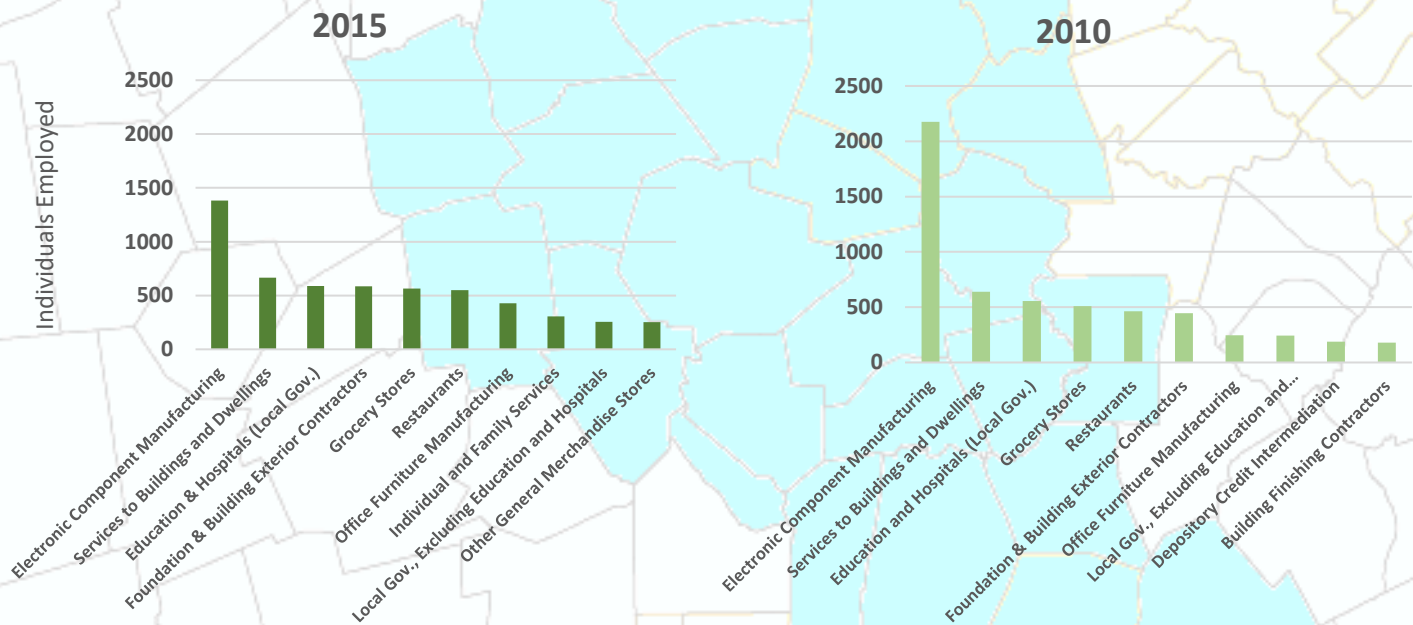
## Expanding Employers



Beyond the year to year averages, in February 2017, the unemployment rate in Hudson was 4.5%. This is lower than the national unemployment rate of 4.8%<sup>3</sup>

The number of employers in Hudson has been increasing at a steady rate. In 2001, there were 526 employers in the town, and by Q2 2016 this number had increased to 641.<sup>3</sup>

## Top Ten Industries In Hudson



**Top Ten Industries data** and analysis conducted by the Public Policy Center at UMass Dartmouth for the 495/MetroWest Partnership in support of the 495/MW Suburban Edge Community Commission utilizing 2014 US Census Bureau Local Employment Dynamics. For more information on these data sets please visit <http://lehd.ces.census.gov/>

### Sources:

- Mass.gov Municipal Databank <http://www.mass.gov/dor/local-officials/municipal-databank-and-local-aid-unit/databank-reports-new.html> (Line graph municipal data)  
 1. The Warren Group <http://www.twgstats.com/tssub/start.asp> 2. Ycharts Average US Home Values [https://ycharts.com/indicators/sales\\_price\\_of\\_existing\\_homes](https://ycharts.com/indicators/sales_price_of_existing_homes)  
 3. Mass.gov Labor and Workforce Development <http://www.mass.gov/lwd/economic-data/> 4. US Census Bureau <https://www.census.gov/> 5. UMASS Donahue Institute <http://www.donahue.umassp.edu/news-events/institute-news/new-population-estimates-for-mass-released-interactive-map-available>